

Ray White.

marketupdate

May 2011

Remuera

This report is generated from the Ray White intranet system which forms a number of real-time reports that are directly linked to data supplied to our network by REINZ and Quotable Value.

042 sales
in Apr 2011

67 sales in prior month (Mar 2011)

60 % 

39 sales last year (Apr 2010)

07 % 

The report you are looking at is generated in less than 1 minute and is known as a Market Infographic Update. This report is popular with individual salespeople sending it through to their client base on a monthly basis. Other reports that are available in the system include the full market review, real estate trends together with business and individual salesperson analytics. The reports cover every individual area across New Zealand and can be produced either individually or grouped within a region.

For more information regarding this report or other reports that are produced through the Ray White system, please contact Keith Ashkettle at kashkettle@raywhite.com.

average price

\$1 184,000

05 %

up on Mar 2011

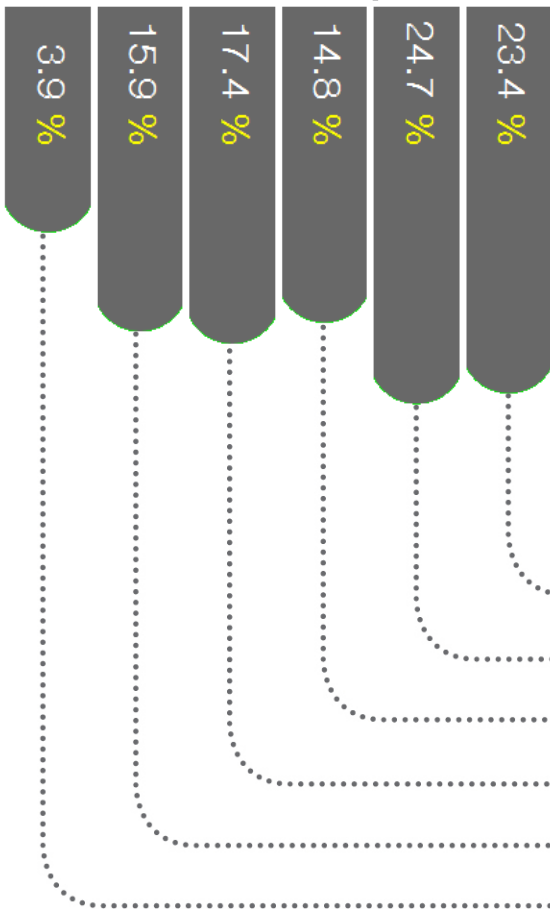
14 %

up on Apr 2010

Remuera

466 sales

12mths to Apr 2011



Top Sale Last Month

A/284 Remuera Rd
Remuera

Sold for
\$5,100,000

Time on Market:
1 week



more than \$1.5M

\$1.0M - \$1.5M

\$800k - \$1.0M

\$600k - \$800k

\$400k - \$600k

less than \$400k



Contact Details

Megan Jaffe
Ray White Remuera
m. 021 611 461

e. megan.jaffe@raywhite.com
w. www.rwremuera.co.nz



Ray White.
marketupdate