

## Canterbury Property Market Update June/July 2011

The Christchurch Residential Real Estate Market has displayed an amazing resilience in its recovery from now 3 major events over the last 10 months.

The sales figures for Christchurch City in May 2011 was 346 dwellings, up 10% on the April sales volume of 315 dwellings.

The majority of the sales are occurring in the North and Western parts of the city, May 2011 Sales Numbers: 261 dwellings compared with 229 in April 2011 and 276 in April 2010.

The Central City, Hill and Eastern suburbs May 2011 Sales Numbers: 85 dwellings compared with 86 in April 2011 and 235 in April 2010.

The outer Areas of North of the Waimakariri River and Selwyn District have experienced strong demand with sales volumes considerably ahead of the same period 12 months ago.

We are continuing to experience an active pool of buyers, but they are somewhat cautious and considered when making buying decisions. The role of a Real Estate salesperson is proving invaluable in concluding a house sale, especially when dealing with issues of structural integrity, insurance, EQC.



## Dave Findlay

Licensee Salesperson

027 220 5874

03 343 0219

dave.findlay@raywhite.com

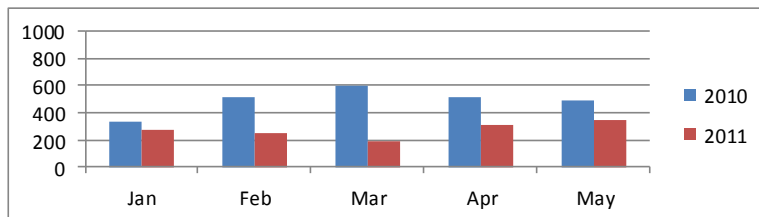
Ray White Metro

[www.rwmetro.co.nz](http://www.rwmetro.co.nz)

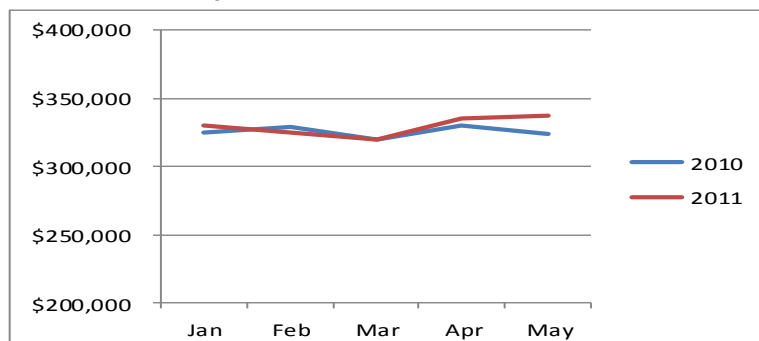
AJ McPherson & Associates Ltd Licensed (REAA 2008)

### CHRISTCHURCH STATISTICS

Residential Dwellings, Number of Sales



Residential Dwellings, Median Sales Price



**Ray White**

Metro